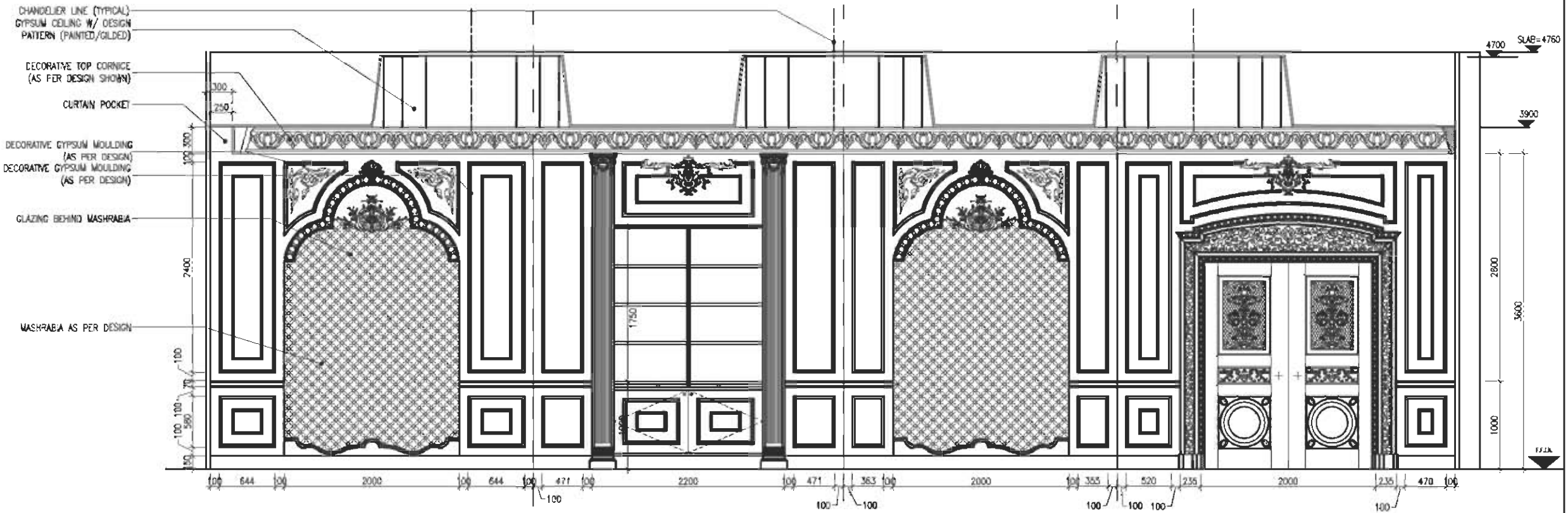
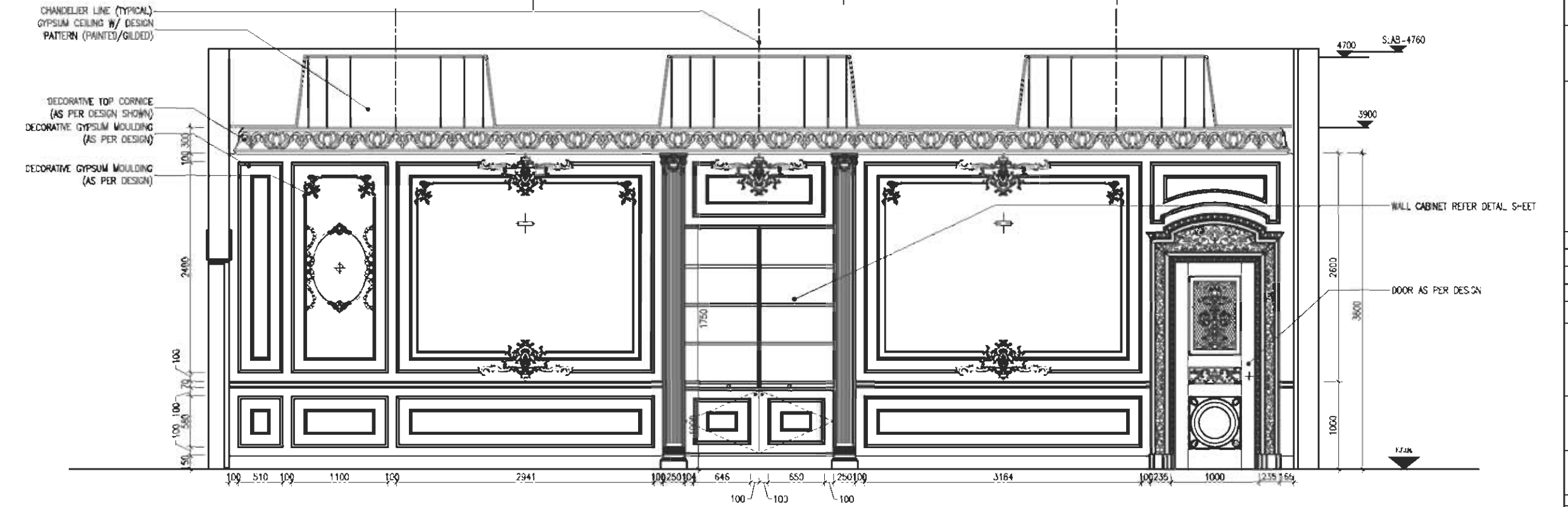


NOTES & LEGENDS :

- NOTES :**
1. NO DIMENSIONS ARE TO BE SCALED FROM THIS DRAWING. REFER ONLY TO DRAWINGS WITH DIMENSIONS OR REQUEST INFORMATION FROM CONSULTANT OR OBTAIN FROM SITE.
 2. FIRST FLOOR HT-4760 (FTL TO SLAB SOFTT).
 3. ALL LIGHTING WATTAGES TO COORDINATE WITH LIGHTING CONTRACTORS.
 4. ALL A/C OUTLETS TO COORDINATE WITH E/M CONTRACTOR.

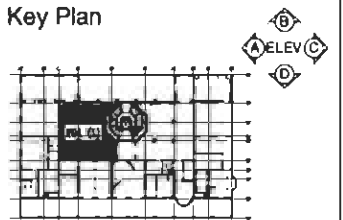


① ELEVATION - C - (FOIL)
SCALE 1:25



② ELEVATION - D - (FOIL)
SCALE 1:25

ALL SIZES AND DIMENSIONS TO BE VERIFIED ON SITE BEFORE COMMENCING OF WORKS. ALL DISCREPANCY ON SITE TO BE NOTED AND BROUGHT TO THE ATTENTION OF THE INTERIOR DESIGNER FOR FURTHER INSTRUCTIONS.



REV.	REVISION DESCRIPTION	DATE	CHK.

INTERIORS INTERNATIONAL DESIGN SERVICES
P.O. BOX 37502, DUBAI, U.A.E.
TEL: 5288-3000 FAX: 52852233

Project
THE PRIVATE DEPARTMENT PALACE (ABU DHABI)

INTARCH INTERNATIONAL INTERIORS
P.O. BOX 37502, DUBAI, U.A.E.

drawn by	checked by	approved by	scale	date
UM			1:25	21/11/09

job number	drawing number	REV
POB/F-AD/FO1(L)/08		00

THIS DRAWING IS A COPYRIGHT OF INTERIORS INTERNATIONAL AND MUST NOT BE USED OR DUPLICATED WITHOUT PRIOR PERMISSION FROM THE COMPANY