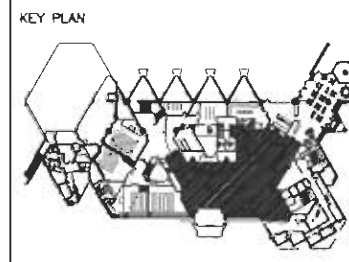
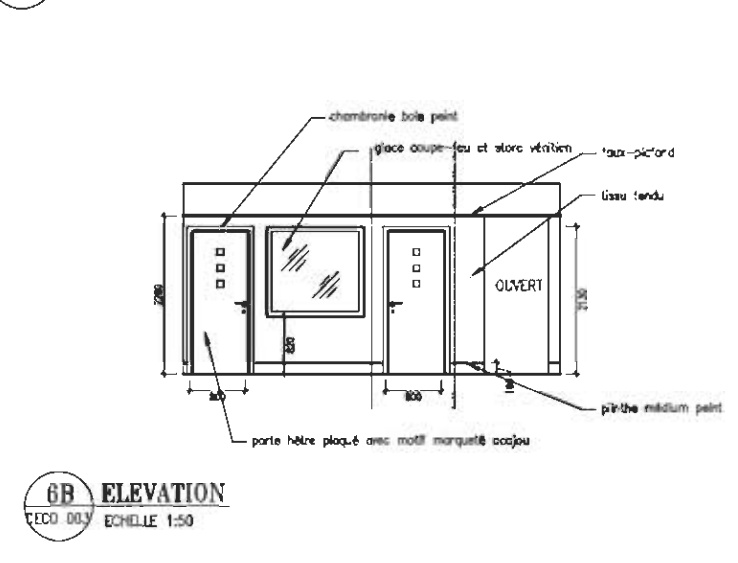
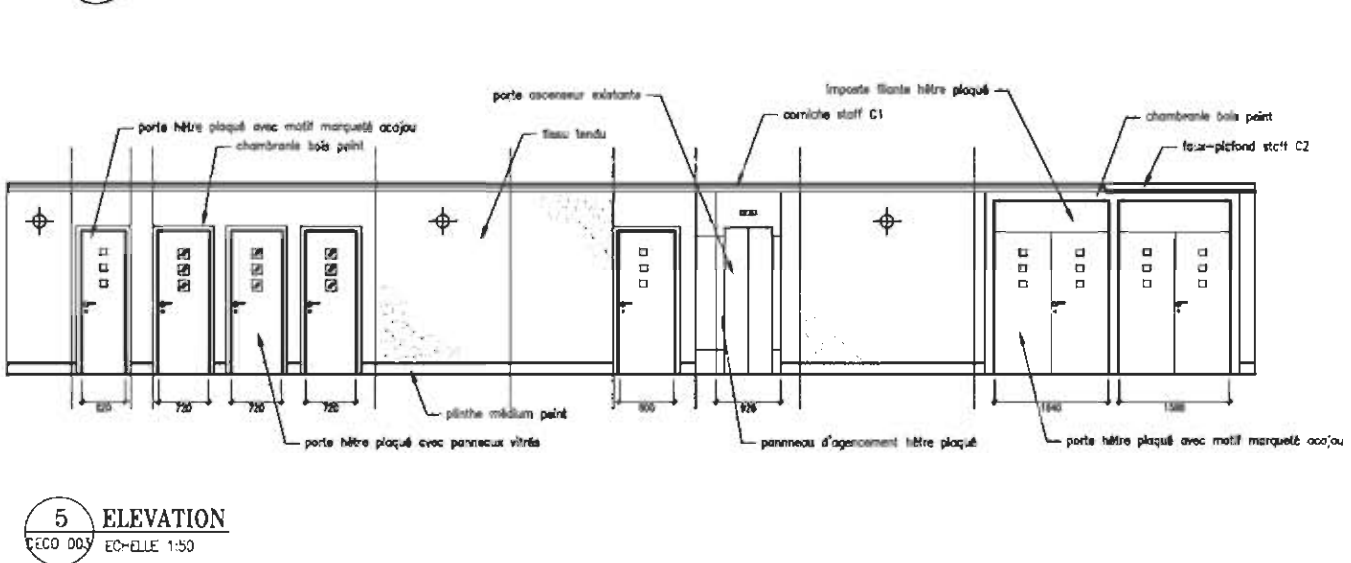
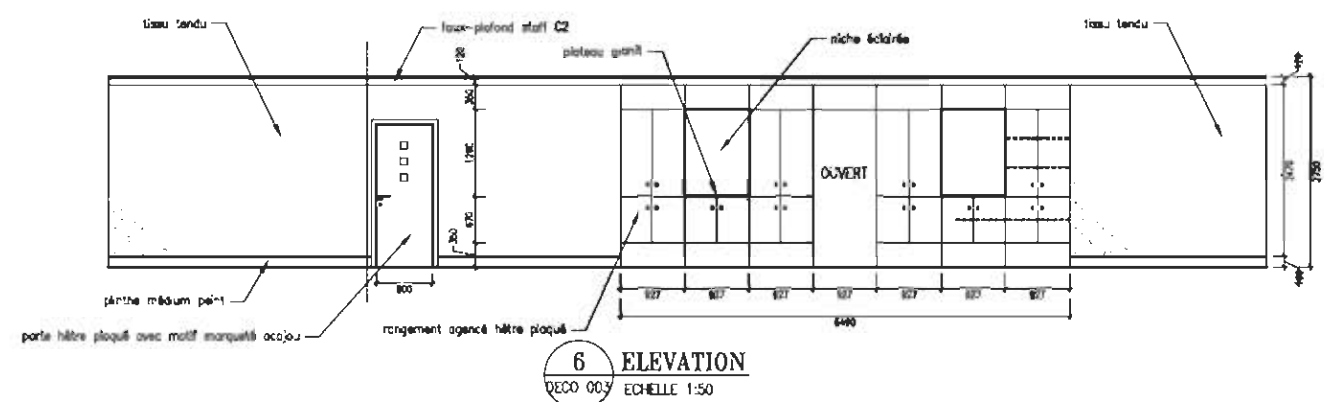
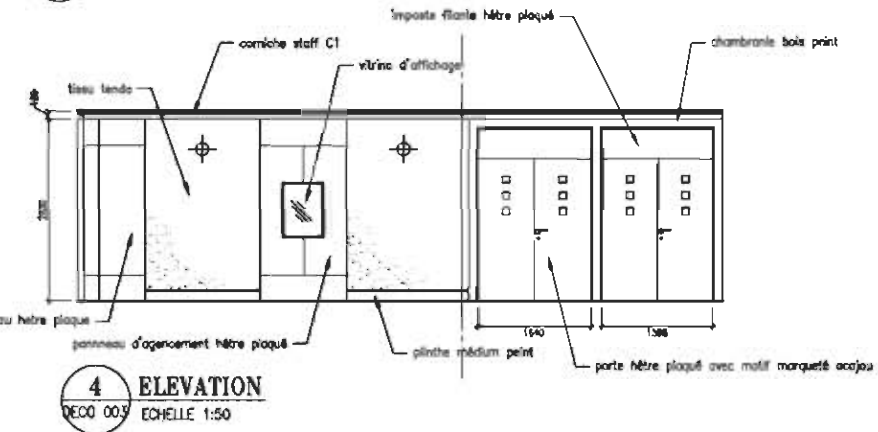
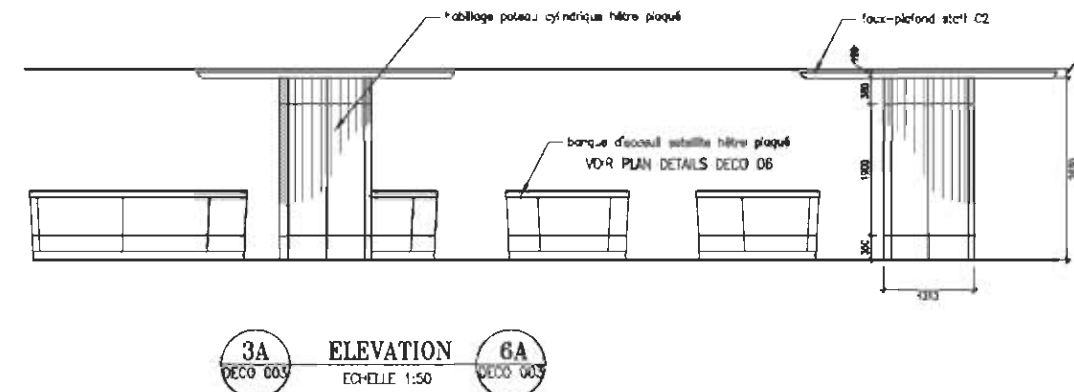
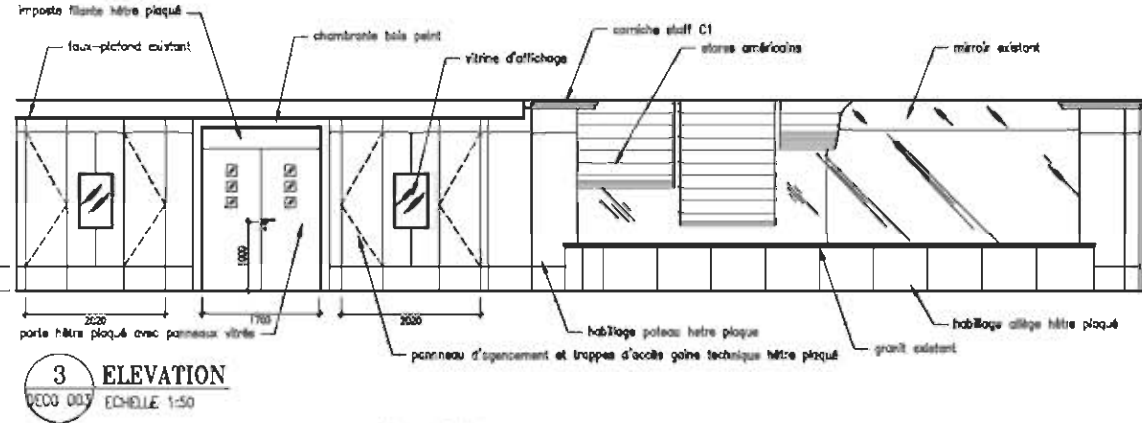
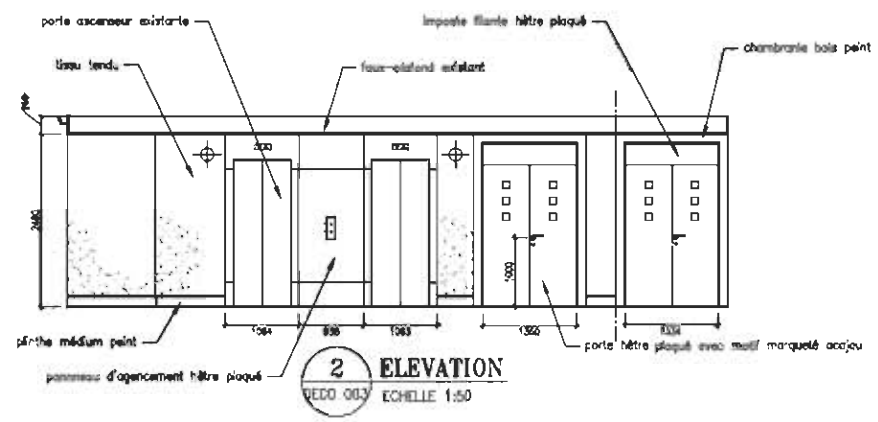
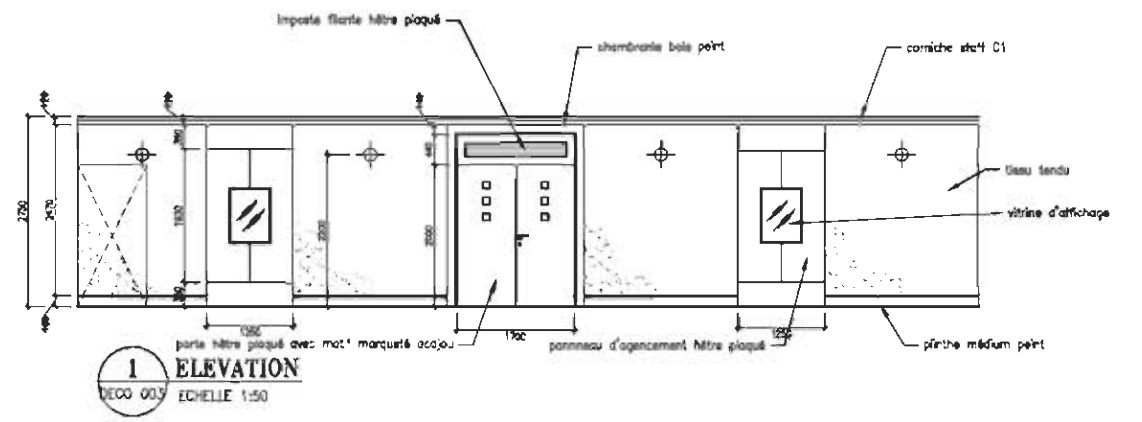


CLIENT/MAÎTRE D'OUVRAGE:
S.H.M. s.a.
 SOCIÉTÉ HOTELIÈRE MONTFLEURY
 25, avenue Beauvillour 06400 CANNES
 Tél: +33 04 93 68 34 63 Fax: +33 04 93 39 76 37

OPERATOR/CHAÎNE HOTELIÈRE
Radisson SAS
HOTEL WORLDWIDE
 Tour Leopold, rue de Cassini 19
 B-1180 Brussels, Belgium
 Tel: +32 2 702 9000
 Fax: +32 2 702 9000



NOTES:
 1. DIMENSIONS IN MILLIMETRES.
 2. DIMENSIONS A NOTER SUR PLACE AVANT FABRICATION.
 3. PLAQUAGE BOIS ET QUINCAILLERIE A L'APPROBATION DU BÉNEFICIAIRE.



REV.	CHANG. DESOUP. EN	DATE	CHECKED	APPROVED
0	FIRST ISSUE	03/03/99		
A	ELEVATIONS & R. 02	05/05/99		
B	ELEVATION 6	17/11/99		
C	AS BUILT	24/02/00		

ISSUE STATUS						
REV.	CONSTRUCTION	EXECC	APPROVAL	INFORMATION	OTHER ISSUES	DATE
A						05/05/99
B						17/11/99
C						24/02/00

PROJECT:
RADISSON SAS MONTFLEURY HOTEL CANNES
 MAIN LOBBY GROUND FLOOR
 HALL REZ DE CHAUSSEE

INTERIOR DESIGN PUBLIC AREAS
 DECORATION PPARTIES PUBLIQUES

INTERIOR DESIGN CONSULTANT:

 Al Bana Tower, 11th Floor, Al Bana Group Building
 P.O. Box 60000, Dubai, United Arab Emirates
 Tel: +971 4 383 8888 Fax: +971 4 383 7000

ARCHITECT/MAÎTRE D'OEUVRE:
 THIERRY GONARD ARCHITECTE DPLG
 4, rue Dierckx, 13000 MARSEILLE
 Tel: 04 90 81 12 89 Fax: 04 90 11 14 00

INTARCH INTERNATIONAL INTERIORS LLC,
 P O BOX 37502, DUBAI, U.A.E.
 TEL: +971-04-3395744, FAX: +971-04-3395745

DRAWN BY:	USMAN	SCALE:	1:50
CHECKED BY:		APPROVED BY:	PLJ
DATE:	24/02/00	REVISION:	0
DRAWING NO.:	DECO 003		SHEET NO.: